

Metal framed-  
indoor/outdoor  
dining seating with  
style and function

- Indoor/Outdoor
- Stackable
- Numerous styles
- Logo back options



encore metal

# encore metal

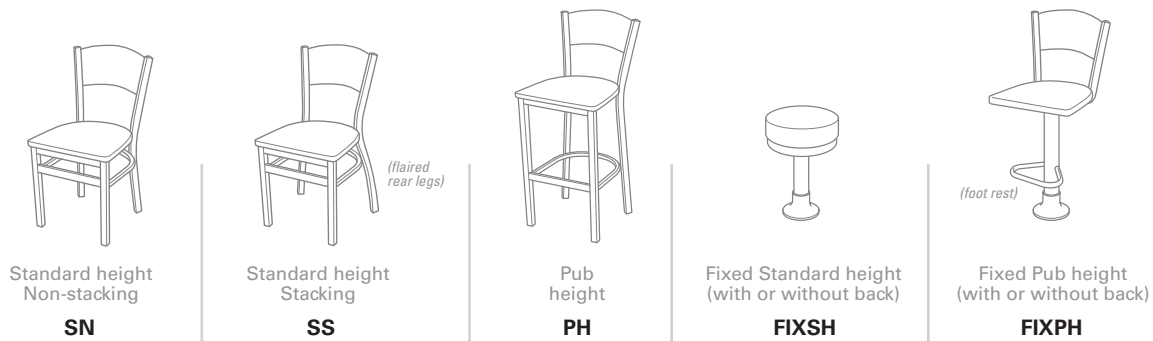
## 1 start your part number:

Start with: **E** (for Encore)

## 1b choose your frame material:

Add: **M** (for metal) (Note: See separate Encore wood brochure for wood frames)

## 2 choose your frame style: Add your frame style suffix: ie. **SS** (for standard height stacking)



## 3 choose your metal frame color: Add metal frame color: ie. **P9** (for Bronze)

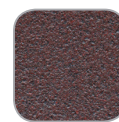
### Paint (Interior)



**P8** (Anodized Nickel)  
Included in base price



**P9** (Bronze)  
Included in base price



**P10** (Burst Rust)  
Included in base price



**P11** (Pewter)  
Included in base price



**P12** (Sandtex Black)  
Included in base price



**P13** (Sparkle Silver)  
Included in base price

### Interior/Exterior



**P1** (Red)  
Included in base price  
RAL3020



**P2** (Yellow)  
Included in base price  
RAL1018



**P3** (Blue)  
Included in base price  
RAL5017



**P4** (Green)  
Included in base price  
RAL6001



**P5** (Orange)  
Included in base price  
RAL2008



**P6** (TEAL)  
Included in base price  
RAL5018

4

choose your back style: Add your back style suffix: **ie. A** (for metal arch back)

Metal backs (Interior/Exterior)



**A** (Metal Arch Back)  
 Standard height, Non-stacking: **\$226**  
 Standard height, Stacking: **N/A**  
 Pub-height: **\$275**  
**Fixed post options:**  
 Standard height: **\$402**  
 Pub-height: **\$530**



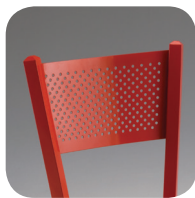
**J** (Metal Jailhouse Back)  
 Standard height, Non-stacking: **\$226**  
 Standard height, Stacking: **\$226**  
 Pub-height: **\$275**  
**Fixed post options:**  
 Standard height: **\$402**  
 Pub-height: **\$530**



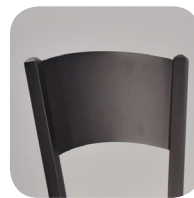
**L** (Metal Ladder Back)  
 Standard height, Non-stacking: **\$226**  
 Standard height, Stacking: **\$226**  
 Pub-height: **\$275**  
**Fixed post options:**  
 Standard height: **\$402**  
 Pub-height: **\$530**



**C** (Metal Cross Back)  
 Standard height, Non-stacking: **\$226**  
 Standard height, Stacking: **\$226**  
 Pub-height: **\$275**  
**Fixed post options:**  
 Standard height: **\$402**  
 Pub-height: **\$530**



**P** (Metal Perforated Back)  
 Standard height, Non-stacking: **\$226**  
 Standard height, Stacking: **\$226**  
 Pub-height: **\$275**  
**Fixed post options:**  
 Standard height: **\$402**  
 Pub-height: **\$530**



**S** (Solid Metal Back)  
 Standard height, Non-stacking: **\$226**  
 Standard height, Stacking: **\$226**  
 Pub-height: **\$275**  
**Fixed post options:**  
 Standard height: **\$402**  
 Pub-height: **\$530**

Wood backs (\*Interior only)



**SO** (Solid Wood Back\*)  
 Standard height, Non-stacking: **\$244**  
 Standard height, Stacking: **\$244**  
 Pub-height: **\$283**  
**Fixed post options:**  
 Standard height: **\$444**  
 Pub-height: **\$572**



**SQ** (Wood Back Squares\*)  
 Standard height, Non-stacking: **\$244**  
 Standard height, Stacking: **\$244**  
 Pub-height: **\$283**  
**Fixed post options:**  
 Standard height: **\$444**  
 Pub-height: **\$572**



**SL** (Wood Back Slots\*)  
 Standard height, Non-stacking: **\$244**  
 Standard height, Stacking: **\$244**  
 Pub-height: **\$283**  
**Fixed post options:**  
 Standard height: **\$444**  
 Pub-height: **\$572**



**CI** (Wood Back Circle\*)  
 Standard height, Non-stacking: **\$244**  
 Standard height, Stacking: **\$244**  
 Pub-height: **\$283**  
**Fixed post options:**  
 Standard height: **\$444**  
 Pub-height: **\$572**



**APL** (Wood Back Apple\*)  
 Standard height, Non-stacking: **\$244**  
 Standard height, Stacking: **\$244**  
 Pub-height: **\$283**  
**Fixed post options:**  
 Standard height: **\$444**  
 Pub-height: **\$572**

Button seat



**BS** (Button seat\*)  
 Standard height: **\$202**  
 Pub-height: **\$332**  
 (Note: Fiberglass seat not available)

4a

choose your wood back stain color (or, move to Step 5 if not necessary):

Add your back color suffix: **ie. S2** (for Cherry stain)

**Wood Stain**  
 Interior



**S1** (Natural)



**S2** (Cherry)



**S3** (Walnut)



**S4** (Mahogany)



**S5** (Solid Black)

**5** choose your seat material:

Add your seat material suffix: **ie. W (for wood stain-indoor)**



**W** (Indoor wood stain)  
See pricing below



**F** (Indoor/Outdoor fiberglass)  
See pricing below



**U** (Indoor-upholstered)  
See pricing below

**6** choose your seat color:

Add your seat color suffix: **ie. S2 (for Cherry stain)**

**Wood Stain**  
Interior



**S1** (Natural)  
Add: **+\$57**



**S2** (Cherry)  
Add: **+\$57**



**S3** (Walnut)  
Add: **+\$57**



**S4** (Mahogany)  
Add: **+\$57**



**S5** (Solid Black)  
Add: **+\$57**

**Fiberglass**  
Interior/ Exterior

*Outdoor seating options are available with metal painted chairs and fiberglass seats.*



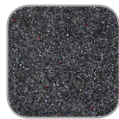
**F471** (Canyon)  
Add: **+\$174**



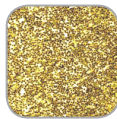
**F506** (Ramses)  
Add: **+\$174**



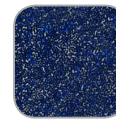
**F500** (Ironwood)  
Add: **+\$174**



**F515** (Europa)  
Add: **+\$174**



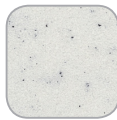
**F3P** (Gold)  
Add: **+\$174**



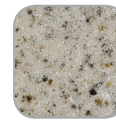
**F71P** (Blue)  
Add: **+\$174**



**F508** (Obsidian)  
Add: **+\$174**



**F130** (Snow)  
Add: **+\$174**



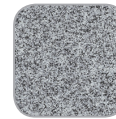
**F219** (Cappuccino)  
Add: **+\$174**



**F601** (Magma)  
Add: **+\$174**



**F310** (Fashion Gray)  
Add: **+\$174**



**F150** (Steel Gray)  
Add: **+\$174**

**Upholstery**  
Available in  
Grades 1-6

**G1** (Grade 1)  
Add: **+\$95**

**G3** (Grade 3)  
Add: **+\$116**

**G5** (Grade 5)  
Add: **+\$160**

**G2** (Grade 2)  
Add: **+\$110**

**G4** (Grade 4)  
Add: **+\$139**

**G6** (Grade 6)  
Add: **+\$187**

Go to [www.nomadflexiblefurniture.com](http://www.nomadflexiblefurniture.com) for fabric grades.

# let's build this chair!

- 1 Start your part number with: **E** (for Encore).  
Ex: **E**
- 1b Add: **M** (for Metal frame).  
Ex: **EM**
- 2 Choose your frame style: **SS** (Standard height stacking).  
Ex: **EMSS**
- 3 Choose your metal frame color: **P13** (Sparkle silver).  
Ex: **EMSSP13**
- 4 Choose your back style: **L** (Ladder back). **\$226**  
Ex: **EMSSP13L**
- 4a Choose your back stain color (or, move to step 5 if not necessary)
- 5 Choose your seat material: **W** (Seat wood).  
Ex: **EMSSP13LW**
- 6 Choose your seat/back color: **S3** (Walnut stain). **+\$57**  
Ex: **EMSSP13LWS3**



Standard metal stacking ladder back with wood seat

end Final part number and price:

**EMSSP13LWS3**

List price: **\$283**



The **encore** chair cart allows for easy transport and storage of up to four chairs per cart. PHSCC-600 (\$579)



The metal framed chairs offer the convenience of stacking or non-stacking. Options include Standard Height and Pub Height.



Customize your wood back chair as an added design element to your space. Custom etching also available. (Call for quote.)



The **encore** chair selection allows you to define your own style to fit the needs of your space. Build your own chair by choosing your frame style, back style, seat option and colors.

**Associations and Purchasing Groups:**



by palmerHAMILTON

143 S. Jackson Street, Suite 1  
Elkhorn, WI 53121-1911

Toll Free: 800-788-1028  
Local: 262-723-8200  
Fax: 262-723-5180

[www.NomadFlexibleFurniture.com](http://www.NomadFlexibleFurniture.com)

To see the complete family of Palmer Hamilton products please see [www.palmerhamilton.com](http://www.palmerhamilton.com)